

IEC Appliance Inlet C14 Modular Assembling Options

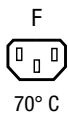


Power Entry Module with Appliance Inlet, Appliance Outlet, Fuse Drawer, Line Switch and EMC Filter

Power Entry Module with Appliance Outlet, Fuse Drawer and EMC Filter

Power Entry Module with Appliance Inlet, Appliance Outlet, Line Switch and EMC Filter

Snap-in version



Description

- Panel mount :
Snap-in version front side
- 2 - 5 Functions :
Appliance Inlet Protection class I , Connector , Line Switch 2-pole , Fuseholder for fuse-links 5 x 20 mm 1- or 2-pole , Line filter in standard and medical version
- Solder terminals 3.5 x 0.8 mm / quick connect terminals 6.3 x 0.8 mm

Characteristics

- Modular component selection
- Individual components soldered on a printed circuit board
- Plug removal necessary for fuse-link replacement
- Technical data of filter-components see blockfilter type 5500
- Fully insulated from the rear
- Suitable for use in medical equipment according to IEC/UL 60601-1 (1 MOOP, 1 MOPP)
For applications according IEC/UL 62368-1 we recommend variants with bleed resistor

Other versions on request

- Line switch with other rocker marking

References

Alternative: version without line filter [Felcom 64](#)
 Alternative: Standard version

Weblinks

[pdf data sheet](#), [html datasheet](#), [General Product Information](#), [Approvals](#), [Distributor-Stock-Check](#), [Accessories](#), [Detailed request for product](#)

Technical Data

| | |
|---------------------------------|---|
| Ratings IEC | 1 - 10A @ Ta 40 °C / 250VAC; 50Hz |
| Ratings UL/CSA | 1 - 10A @ Ta 40 °C / 250VAC; 60Hz |
| Leakage Current | standard < 0.5mA (250V / 60Hz) medical < 5 µA (250 V / 60 Hz) |
| Dielectric Strength | > 1.7kVDC between L-N > 2.7kVDC between L/N-PE Test voltage (2 sec) |
| Allowable Operation Temperature | -25 °C to 85 °C |
| Climatic Category | 25/085/21 acc. to IEC 60068-1 |
| IP-Protection | front side IP40 acc. to IEC 60529 |
| Protection Class | Suitable for appliances with protection class I acc. to IEC 61140 |
| Terminal | Solder terminals 3.5 x 0.8 mm / quick connect terminals 6.3 x 0.8 mm |
| Panel Thickness S | Snap-in: 1/1.2/1.5/2/2.5/3mm1/1.2/1.5/2/2.5/3 mm |
| Material | Thermoplastic, black, UL 94V-0 |

| | |
|-----------------------------------|--|
| Appliance inlet/-outlet | C14 acc. to IEC 60320-1, F acc. to UL 498, CSA C22.2 no. 42 (for cold conditions) pin-temperature 70 °C, 10A, Protection Class I |
| Fuseholder | 1-/2-pole, Shocksafe category PC2 acc. to IEC 60127-6, for fuse-links 5 x 20mm |
| Rated Power Acceptance @ Ta 23 °C | 5 x 20: 2W (1 pole)/ 1.6W (2-pole) per pole |
| Power Acceptance @ Ta > 23°C | Admissible power acceptance at higher ambient temperature see derating curves |
| Line Switch | Rocker switch 2-pole, non-illuminated, acc. to IEC 61058-1 Technical Details |
| Line Filter | Standard version, IEC 60939, UL 1283, CSA C22.2 no. 8 Technical Details |
| MTBF | > 1'400'000h acc. to MIL-HB-217 F |



Detailed information on product approvals, code requirements, usage instructions and detailed test conditions can be looked up in [Details about Approvals](#)

SCHURTER products are designed for use in industrial environments. They have approvals from independent testing bodies according to national and international standards. Products with specific characteristics and requirements such as required in the automotive sector according to IATF 16949, medical technology according to ISO 13485 or in the aerospace industry can be offered exclusively with customer-specific, individual agreements by SCHURTER.

Approvals

The approval mark is used by the testing authorities to certify compliance with the safety requirements placed on electronic products.

Approval Reference Type: Felcom

| Approval Logo | Certificates | Certification Body | Description |
|--|-------------------------------|--------------------|----------------------------|
|  | VDE Approvals | VDE | Certificate Number: 101307 |
|  | UL Approvals | UL | UR File Number: E72928 |

Product standards

Product standards that are referenced

| Organization | Design | Standard | Description |
|--------------|-----------------------|------------------|---|
| | Designed according to | IEC 60320-1 | Appliance couplers for household and similar general purposes |
| | Designed according to | IEC 60939 | Passive filters for suppressing electromagnetic interference |
| | Designed according to | IEC 60127-6 | Miniature fuses. Part 6. Fuse-holders for miniature fuse-links |
| | Designed according to | IEC 61058-1 | Switches for appliances. Part 1. General requirements |
| | Designed according to | UL 498 | Standard for Attachment Plugs and Receptacles |
| | Designed according to | UL 1283 | Passive filters for suppressing electromagnetic interference |
| | Designed according to | CSA C22.2 no. 42 | General Use Receptacles, Attachment Plugs, and Similar Wiring Devices |
| | Designed according to | CSA C22.2 no. 8 | Electromagnetic interference (EMI) filters |







Application standards

Application standards where the product can be used

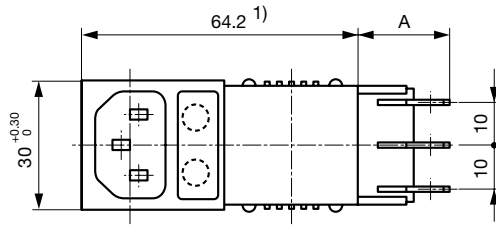
| Organization | Design | Standard | Description |
|--------------|--------------------------------|----------------|--|
| | Suitable for applications acc. | IEC/UL 62368-1 | Audio/video, information and communication technology equipment - Part 1: Safety requirements |
| | Suitable for applications acc. | IEC 60601-1 | Medical electrical equipment - Part 1: General requirements for basic safety and essential performance |
| | Suitable for applications acc. | IEC 60335-1 | Safety of electrical appliances for household and similar purposes. Meets the requirements for appliances in unattended use. This includes the enhanced requirements of glow wire tests acc. to IEC 60695-2-11 or -12 & -13. |

Compliances

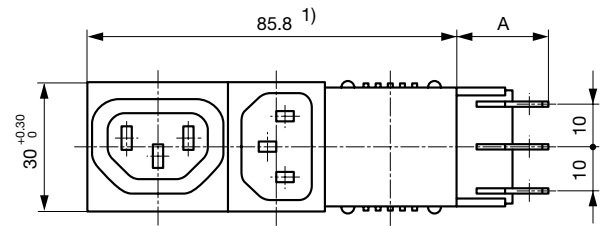
The product complies with following Guide Lines

| Identification | Details | Initiator | Description |
|--|--|-------------|---|
|  | CE declaration of conformity | SCHURTER AG | The CE marking declares that the product complies with the applicable requirements laid down in the harmonisation of Community legislation on its affixing in accordance with EU Regulation 765/2008. |
|  | UKCA declaration of conformity | SCHURTER AG | The UKCA marking declares that the product complies with the applicable requirements laid down in the British Amendment of Regulation (EC) 765/2008. |
|  | RoHS | SCHURTER AG | Directive RoHS 2011/65/EU, Amendment (EU) 2015/863 |
|  | China RoHS | SCHURTER AG | The law SJ / T 11363-2006 (China RoHS) has been in force since 1 March 2007. It is similar to the EU directive RoHS. |
|  | White Paper Glow wire test | SCHURTER AG | Meets the requirements of IEC 60335-1 for appliances in unattended use. This includes the enhanced requirements of glow wire tests acc. to IEC 60695-2-11 or -12 & -13. |
|  | Medical Equipment | SCHURTER AG | Suitable for use in medical equipment according to IEC/UL 60601-1 (1 M00P, 1 MOPP) |

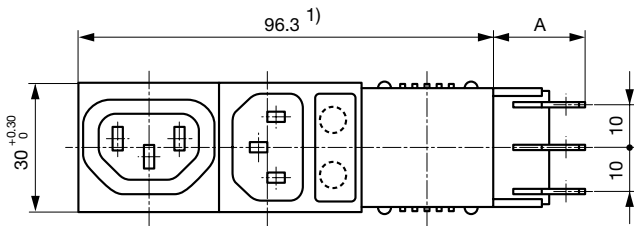
Dimension [mm]



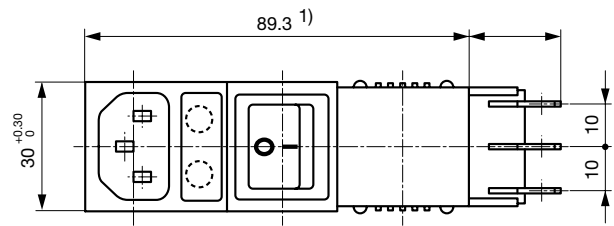
Variants 5411.XX5X.XXX
 Mounting hole: $63 +0.2 \times 27.6 +0.2$
 A: Quick-connect terminal 6.3x0.8 mm: 22 mm
 A: Solder terminal 3.5x0.8 mm: 17.5 mm
 S: Panel thickness



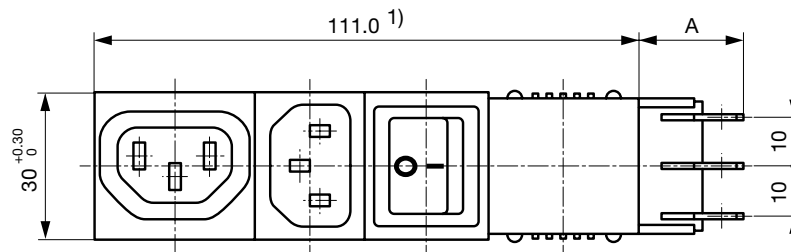
Variants 5421.X05X.XXX
 Mounting hole: $85.9+0.2 \times 27.6+0.2$
 A: Quick-connect terminal 6.3x0.8 mm: 22 mm
 A: Solder terminal 3.5x0.8 mm: 17.5 mm
 S: Panel thickness



Variants 5423.XX5X.XXX
 Mounting hole: $96.4+0.2 \times 27.6+0.2$
 A: Quick-connect terminal 6.3x0.8 mm: 22 mm
 A: Solder terminal 3.5x0.8 mm: 17.5 mm
 S: Panel thickness

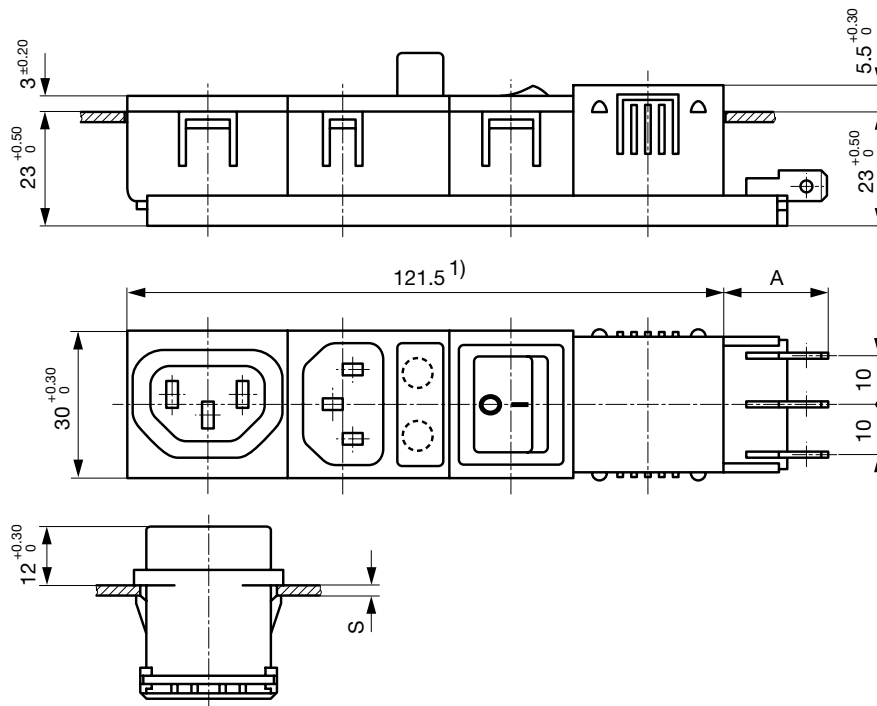


Variants 5424.XX5X.XXX
 Mounting hole: $87.9+0.2 \times 27.6+0.2$
 A: Quick-connect terminal 6.3x0.8 mm: 22 mm
 A: Solder terminal 3.5x0.8 mm: 17.5 mm
 S: Panel thickness



Variants 5431.X05X.XXX
 Mounting hole: $111.1+0.2 \times 27.6+0.2$
 A: Quick-connect terminal 6.3x0.8 mm: 22 mm
 A: Solder terminal 3.5x0.8 mm: 17.5 mm
 S: Panel thickness

1) In an uninstalled state the total length of the combinations may be slightly bigger than the nominal dimension. However, they can always be installed in the specified mounting cutouts.



Variants 5432.XX5X.XXX

Mounting hole: 121.6+0,2 x 27.6+0,2

A: Quick-connect terminal 6.3x0.8 mm: 22 mm

A: Solder terminal 3.5x0.8 mm: 17.5 mm

S: Panel thickness

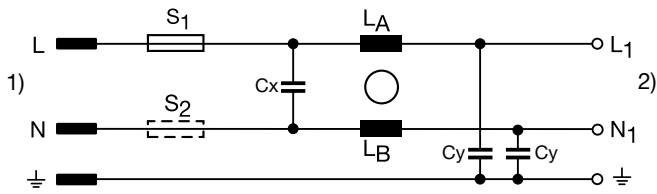
1) In an uninstalled state the total length of the combinations may be slightly bigger than the nominal dimension. However, they can always be installed in the specified mounting cutouts.

Technical Data of Filter-Components

| Rated Current [A] | Filter-Type | Inductances L [mH] | Capacitance CX [nF] | Capacitance CY [nF] | R [MΩ] |
|-------------------|----------------------|--------------------|---------------------|---------------------|--------|
| 1 | Standard version | 2 x 11 | 47 | 2.2 | - |
| 2 | Standard version | 2 x 4 | 47 | 2.2 | - |
| 4 | Standard version | 2 x 1.6 | 47 | 2.2 | - |
| 6 | Standard version | 2 x 0.7 | 47 | 2.2 | - |
| 8 | Standard version | 2 x 0.6 | 47 | 2.2 | - |
| 10 | Standard version | 2 x 0.4 | 47 | 2.2 | - |
| 1 | Medical Version (M5) | 2 x 11 | 47 | - | 1 |
| 2 | Medical Version (M5) | 2 x 4 | 47 | - | 1 |
| 4 | Medical Version (M5) | 2 x 1.6 | 47 | - | 1 |
| 6 | Medical Version (M5) | 2 x 0.7 | 47 | - | 1 |
| 8 | Medical Version (M5) | 2 x 0.6 | 47 | - | 1 |
| 10 | Medical Version (M5) | 2 x 0.4 | 47 | - | 1 |

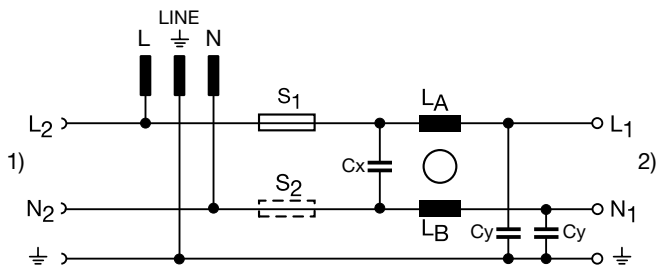
Diagrams

5411



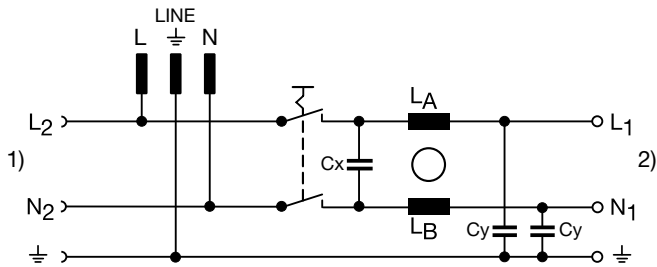
1) Line
 2) Load 1

5423



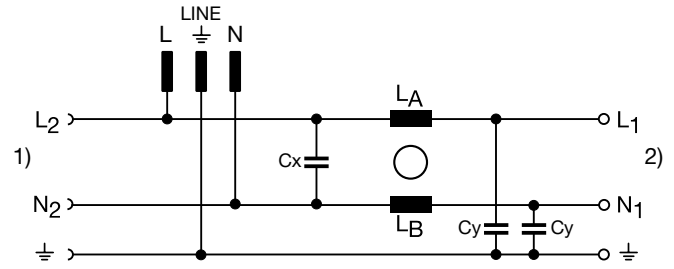
1) Load 2
 2) Load 1

5431



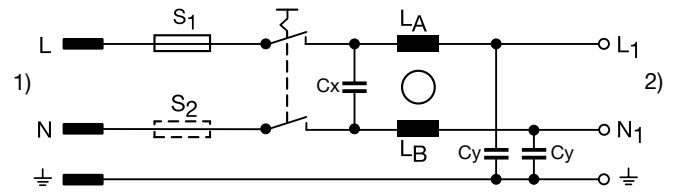
1) Load 2
 2) Load 1

5421



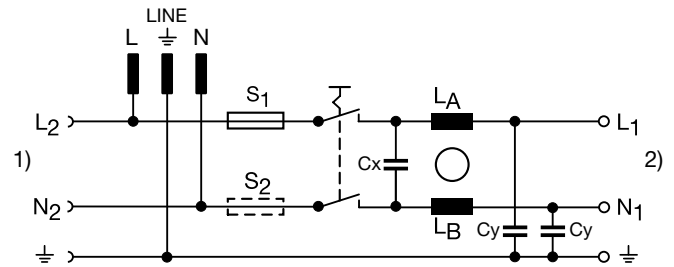
1) Load 2
 2) Load 1

5424



1) Line
 2) Load 1

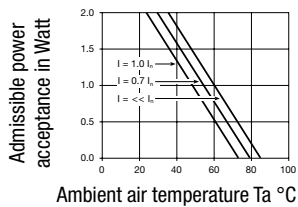
5432



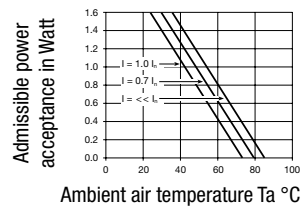
1) Load 2
 2) Load 1

Derating Curves

1-pole



2-pole



All Variants

| Type | Rated Current [A] | Filter-Type | Panel Thickness [mm] | Connection type | Line Switch | Fuseholder | Connectors | Connector | Order Number |
|-----------|-------------------|----------------------|----------------------|--------------------------------------|-------------|------------|------------|-----------|---------------|
| Felcom 54 | 1 | Standard version | 1.5 | Solder terminals 3.5 x 0.8 mm | - | 1-pole | C14 | - | 5411.1151.151 |
| Felcom 54 | 1 | Standard version | 2.5 | Solder terminals 3.5 x 0.8 mm | - | 1-pole | C14 | - | 5411.1151.251 |
| Felcom 54 | 1 | Standard version | 1.5 | Quick connect terminals 6.3 x 0.8 mm | - | 2-pole | C14 | - | 5411.1253.151 |
| Felcom 54 | 1 | Standard version | 2.0 | Quick connect terminals 6.3 x 0.8 mm | - | - | C14 | F | 5421.1053.201 |
| Felcom 54 | 1 | Standard version | 1.5 | Solder terminals 3.5 x 0.8 mm | 2-pole | 1-pole | C14 | - | 5424.1151.151 |
| Felcom 54 | 1 | Standard version | 2.0 | Solder terminals 3.5 x 0.8 mm | 2-pole | 1-pole | C14 | - | 5424.1151.201 |
| Felcom 54 | 1 | Standard version | 3.0 | Solder terminals 3.5 x 0.8 mm | 2-pole | 1-pole | C14 | - | 5424.1151.301 |
| Felcom 54 | 1 | Standard version | 2.0 | Quick connect terminals 6.3 x 0.8 mm | 2-pole | 1-pole | C14 | - | 5424.1153.201 |
| Felcom 54 | 1 | Standard version | 3.0 | Quick connect terminals 6.3 x 0.8 mm | 2-pole | 1-pole | C14 | - | 5424.1153.301 |
| Felcom 54 | 1 | Standard version | 1.0 | Quick connect terminals 6.3 x 0.8 mm | 2-pole | 2-pole | C14 | - | 5424.1253.101 |
| Felcom 54 | 1 | Standard version | 1.5 | Quick connect terminals 6.3 x 0.8 mm | 2-pole | 2-pole | C14 | - | 5424.1253.151 |
| Felcom 54 | 1 | Standard version | 2.0 | Quick connect terminals 6.3 x 0.8 mm | 2-pole | 2-pole | C14 | - | 5424.1253.201 |
| Felcom 54 | 1 | Standard version | 3.0 | Quick connect terminals 6.3 x 0.8 mm | 2-pole | 2-pole | C14 | - | 5424.1253.301 |
| Felcom 54 | 1 | Standard version | 2.5 | Quick connect terminals 6.3 x 0.8 mm | 2-pole | 1-pole | C14 | F | 5432.1153.251 |
| Felcom 54 | 1 | Standard version | 2.0 | Quick connect terminals 6.3 x 0.8 mm | 2-pole | 2-pole | C14 | F | 5432.1253.201 |
| Felcom 54 | 1 | Medical Version (M5) | 2.0 | Solder terminals 3.5 x 0.8 mm | - | 2-pole | C14 | - | 5411.1251.203 |
| Felcom 54 | 1 | Medical Version (M5) | 2.0 | Solder terminals 3.5 x 0.8 mm | 2-pole | 2-pole | C14 | - | 5424.1251.203 |
| Felcom 54 | 1 | Medical Version (M5) | 1.5 | Quick connect terminals 6.3 x 0.8 mm | 2-pole | 2-pole | C14 | - | 5424.1253.153 |
| Felcom 54 | 1 | Medical Version (M5) | 3.0 | Quick connect terminals 6.3 x 0.8 mm | 2-pole | 2-pole | C14 | - | 5424.1253.303 |
| Felcom 54 | 2 | Standard version | 1.2 | Solder terminals 3.5 x 0.8 mm | - | 1-pole | C14 | - | 5411.2151.121 |
| Felcom 54 | 2 | Standard version | 2.0 | Solder terminals 3.5 x 0.8 mm | - | - | C14 | F | 5421.2051.201 |
| Felcom 54 | 2 | Standard version | 1.5 | Solder terminals 3.5 x 0.8 mm | 2-pole | 1-pole | C14 | - | 5424.2151.151 |
| Felcom 54 | 2 | Standard version | 2.5 | Solder terminals 3.5 x 0.8 mm | 2-pole | 1-pole | C14 | - | 5424.2151.251 |
| Felcom 54 | 2 | Standard version | 1.0 | Quick connect terminals 6.3 x 0.8 mm | 2-pole | 1-pole | C14 | - | 5424.2153.101 |
| Felcom 54 | 2 | Standard version | 1.2 | Quick connect terminals 6.3 x 0.8 mm | 2-pole | 2-pole | C14 | - | 5424.2253.121 |
| Felcom 54 | 2 | Standard version | 2.0 | Quick connect terminals 6.3 x 0.8 mm | 2-pole | 2-pole | C14 | - | 5424.2253.201 |
| Felcom 54 | 2 | Standard version | 3.0 | Quick connect terminals 6.3 x 0.8 mm | 2-pole | 2-pole | C14 | - | 5424.2253.301 |
| Felcom 54 | 2 | Standard version | 1.0 | Quick connect terminals 6.3 x 0.8 mm | 2-pole | - | C14 | F | 5431.2053.101 |
| Felcom 54 | 2 | Standard version | 1.5 | Quick connect terminals 6.3 x 0.8 mm | 2-pole | 1-pole | C14 | F | 5432.2153.151 |
| Felcom 54 | 2 | Standard version | 1.2 | Quick connect terminals 6.3 x 0.8 mm | 2-pole | 2-pole | C14 | F | 5432.2253.121 |
| Felcom 54 | 2 | Standard version | 2.0 | Quick connect terminals 6.3 x 0.8 mm | 2-pole | 2-pole | C14 | F | 5432.2253.201 |
| Felcom 54 | 2 | Standard version | 2.5 | Quick connect terminals 6.3 x 0.8 mm | 2-pole | 2-pole | C14 | F | 5432.2253.251 |
| Felcom 54 | 2 | Medical Version (M5) | 1.2 | Quick connect terminals 6.3 x 0.8 mm | - | 2-pole | C14 | - | 5411.2253.123 |
| Felcom 54 | 2 | Medical Version (M5) | 2.0 | Solder terminals 3.5 x 0.8 mm | 2-pole | 2-pole | C14 | - | 5424.2251.203 |
| Felcom 54 | 2 | Medical Version (M5) | 1.5 | Quick connect terminals 6.3 x 0.8 mm | 2-pole | 2-pole | C14 | - | 5424.2253.153 |
| Felcom 54 | 2 | Medical Version (M5) | 2.0 | Quick connect terminals 6.3 x 0.8 mm | 2-pole | 2-pole | C14 | - | 5424.2253.203 |
| Felcom 54 | 4 | Standard version | 1.5 | Quick connect terminals 6.3 x 0.8 mm | - | 2-pole | C14 | - | 5411.4253.151 |
| Felcom 54 | 4 | Standard version | 2.5 | Quick connect terminals 6.3 x 0.8 mm | - | 2-pole | C14 | - | 5411.4253.251 |
| Felcom 54 | 4 | Standard version | 1.5 | Quick connect terminals 6.3 x 0.8 mm | - | - | C14 | F | 5421.4053.151 |
| Felcom 54 | 4 | Standard version | 1.5 | Quick connect terminals 6.3 x 0.8 mm | - | 2-pole | C14 | F | 5423.4253.151 |
| Felcom 54 | 4 | Standard version | 1.5 | Quick connect terminals 6.3 x 0.8 mm | 2-pole | 1-pole | C14 | - | 5424.4153.151 |
| Felcom 54 | 4 | Standard version | 1.0 | Quick connect terminals 6.3 x 0.8 mm | 2-pole | 2-pole | C14 | - | 5424.4253.101 |

| Type | Rated Current [A] | Filter-Type | Panel Thickness [mm] | Connection type | Line Switch | Fuseholder | Connectors | Connector | Order Number |
|-----------|-------------------|----------------------|----------------------|--------------------------------------|-------------|------------|------------|-----------|---------------|
| Felcom 54 | 4 | Standard version | 1.5 | Quick connect terminals 6.3 x 0.8 mm | 2-pole | 2-pole | C14 | - | 5424.4253.151 |
| Felcom 54 | 4 | Standard version | 2.0 | Quick connect terminals 6.3 x 0.8 mm | 2-pole | 2-pole | C14 | - | 5424.4253.201 |
| Felcom 54 | 4 | Standard version | 2.5 | Quick connect terminals 6.3 x 0.8 mm | 2-pole | 2-pole | C14 | - | 5424.4253.251 |
| Felcom 54 | 4 | Standard version | 2.5 | Quick connect terminals 6.3 x 0.8 mm | 2-pole | 1-pole | C14 | F | 5432.4153.251 |
| Felcom 54 | 4 | Standard version | 2.0 | Solder terminals 3.5 x 0.8 mm | 2-pole | 2-pole | C14 | F | 5432.4251.201 |
| Felcom 54 | 4 | Standard version | 1.5 | Quick connect terminals 6.3 x 0.8 mm | 2-pole | 2-pole | C14 | F | 5432.4253.151 |
| Felcom 54 | 4 | Standard version | 2.0 | Quick connect terminals 6.3 x 0.8 mm | 2-pole | 2-pole | C14 | F | 5432.4253.201 |
| Felcom 54 | 4 | Medical Version (M5) | 1.0 | Quick connect terminals 6.3 x 0.8 mm | - | 2-pole | C14 | - | 5411.4253.103 |
| Felcom 54 | 4 | Medical Version (M5) | 1.0 | Quick connect terminals 6.3 x 0.8 mm | 2-pole | 2-pole | C14 | - | 5424.4253.103 |
| Felcom 54 | 4 | Medical Version (M5) | 1.5 | Quick connect terminals 6.3 x 0.8 mm | 2-pole | 2-pole | C14 | - | 5424.4253.153 |
| Felcom 54 | 4 | Medical Version (M5) | 2.0 | Quick connect terminals 6.3 x 0.8 mm | 2-pole | 2-pole | C14 | - | 5424.4253.203 |
| Felcom 54 | 4 | Medical Version (M5) | 3.0 | Quick connect terminals 6.3 x 0.8 mm | 2-pole | 2-pole | C14 | - | 5424.4253.303 |
| Felcom 54 | 6 | Standard version | 1.5 | Quick connect terminals 6.3 x 0.8 mm | - | 2-pole | C14 | - | 5411.6253.151 |
| Felcom 54 | 6 | Standard version | 2.0 | Quick connect terminals 6.3 x 0.8 mm | - | 2-pole | C14 | - | 5411.6253.201 |
| Felcom 54 | 6 | Standard version | 1.5 | Quick connect terminals 6.3 x 0.8 mm | - | 2-pole | C14 | F | 5423.6253.151 |
| Felcom 54 | 6 | Standard version | 2.0 | Quick connect terminals 6.3 x 0.8 mm | - | 2-pole | C14 | F | 5423.6253.201 |
| Felcom 54 | 6 | Standard version | 3.0 | Quick connect terminals 6.3 x 0.8 mm | - | 2-pole | C14 | F | 5423.6253.301 |
| Felcom 54 | 6 | Standard version | 1.5 | Solder terminals 3.5 x 0.8 mm | 2-pole | 1-pole | C14 | - | 5424.6151.151 |
| Felcom 54 | 6 | Standard version | 1.2 | Quick connect terminals 6.3 x 0.8 mm | 2-pole | 1-pole | C14 | - | 5424.6153.121 |
| Felcom 54 | 6 | Standard version | 1.5 | Quick connect terminals 6.3 x 0.8 mm | 2-pole | 1-pole | C14 | - | 5424.6153.151 |
| Felcom 54 | 6 | Standard version | 1.0 | Quick connect terminals 6.3 x 0.8 mm | 2-pole | 2-pole | C14 | - | 5424.6253.101 |
| Felcom 54 | 6 | Standard version | 1.5 | Quick connect terminals 6.3 x 0.8 mm | 2-pole | 2-pole | C14 | - | 5424.6253.151 |
| Felcom 54 | 6 | Standard version | 2.0 | Quick connect terminals 6.3 x 0.8 mm | 2-pole | 2-pole | C14 | - | 5424.6253.201 |
| Felcom 54 | 6 | Standard version | 2.5 | Quick connect terminals 6.3 x 0.8 mm | 2-pole | 2-pole | C14 | - | 5424.6253.251 |
| Felcom 54 | 6 | Standard version | 3.0 | Quick connect terminals 6.3 x 0.8 mm | 2-pole | 2-pole | C14 | - | 5424.6253.301 |
| Felcom 54 | 6 | Standard version | 2.0 | Solder terminals 3.5 x 0.8 mm | 2-pole | 2-pole | C14 | F | 5432.6251.201 |
| Felcom 54 | 6 | Standard version | 1.0 | Quick connect terminals 6.3 x 0.8 mm | 2-pole | 2-pole | C14 | F | 5432.6253.101 |
| Felcom 54 | 6 | Standard version | 1.5 | Quick connect terminals 6.3 x 0.8 mm | 2-pole | 2-pole | C14 | F | 5432.6253.151 |
| Felcom 54 | 6 | Standard version | 3.0 | Quick connect terminals 6.3 x 0.8 mm | 2-pole | 2-pole | C14 | F | 5432.6253.301 |
| Felcom 54 | 6 | Medical Version (M5) | 2.5 | Quick connect terminals 6.3 x 0.8 mm | - | 2-pole | C14 | - | 5411.6253.253 |
| Felcom 54 | 8 | Standard version | 1.2 | Quick connect terminals 6.3 x 0.8 mm | - | 2-pole | C14 | - | 5411.6253.121 |

Availability for all products can be searched real-time: <https://www.schurter.com/en/info-center/support-tools/stock-check-distributors>

Packaging unit 10 Pcs

Accessories

Description



[Cord_retaining_kits](#)
 Cord retaining strain relief

Flat head, A

4700.0001

Mating Inlets/Plugs

Category / Description

[Plug Overview complete](#)



| | |
|--|------|
| 4732, Mounting: Power Cord, Plug: IEC E, Cable | 4732 |
| 4735, Mounting: Power Cord, Plug: IEC E, Cable | 4735 |
| 9009, Mounting: Plug: IEC E, Screw clamps | 9009 |
| 4733, Mounting: Power Cord, Plug: IEC E, Cable | 4733 |
| 4736, Mounting: Power Cord, Plug: IEC E, Cable | 4736 |
| ... | ... |

Mating Outlets/Connectors

[Appliance Outlet Overview complete](#)



| | |
|--|------|
| 4787, Mounting: Screw-on mounting, Appliance Outlet: IEC Solder terminals, 10 A, Suitable for appliances with protection class I | 4787 |
| 4788, Mounting: Snap-in version, Appliance Outlet: IEC Solder / Quick Connect, 10 A, Suitable for appliances with protection class I | 4788 |
| IEC Appliance Outlet F or H, Screw-on Mounting, Front Side, Solder, PCB or Quick-connect Terminal | 5091 |

[Connector Overview complete](#)



| | |
|---|---------|
| 4782 Mounting: Power Cord, 3 x 1 mm ² / 3 x 18 AWG, Cable, Connector: IEC C13 | 4782 |
| 4785 Mounting: Power Cord, 3 x 1 mm ² / 3 x 18 AWG, Cable, Connector: IEC C13 | 4785 |
| 4300-06 Mounting: Power Cord, 3 x 1 mm ² / 3 x 18 AWG, Cable, Connector: IEC C13 | 4300-06 |
| 4781 Mounting: Power Cord, Cable, Connector: IEC C15 | 4781 |
| 4784 Mounting: Power Cord, 3 x 1 mm ² / 3 x 18 AWG, Cable, Connector: IEC C15 | 4784 |